



# The Garden Club of Coral Springs

**COME GROW WITH US!**

August 2021

Member of Florida Federation of Garden Clubs ([www.ffgc.org](http://www.ffgc.org)) and National Garden Club ([www.gardenclub.org](http://www.gardenclub.org))

MONTHLY MEETINGS ARE THE 2ND THURSDAY DURING THE MONTHS OF OCTOBER THROUGH MAY FROM 10 AM TO NOON - MEETINGS ARE HELD IN MULLINS PARK, 10000 BEN GEIGER DR, CORAL SPRINGS - LOCATIONS OF FIELD TRIPS VARY.

## A MESSAGE FROM OUR PRESIDENT JERI DECKER

The Garden Club of Coral Springs started the summer off planning exciting trips and speakers for next year. We hope to start an evening extension for members who can't meet during the day. This will also lead to an expanded membership!

Thank you to the Florida Federation of Garden Clubs for the \$500 grant towards the initial installation of native orchids through the Million Orchid Project. Our feature article this month is about this project.

During National Garden Week members of our club donated 12 native butterfly plants from their gardens to The Woman's Club of West Broward. The plants enhanced their butterfly garden at Robbins Preserve Park Lodge in Davie.

Members also put together 100 terrarium plant kits, along with presenting units. The terrariums included plants. Topics also included bugs, the edible parts of plants and the cycle of water. We presented this project to two preschools and one summer camp. Children put together their own individual terrariums and took them home.



I'd like to welcome new members Ahkeem Desinor, Carol Johnson, Carol Hirshmann, Farrah Baptiste and Olivia Clearly and welcome back Ronnie Sheldon. Your enthusiasm and participation will be a great addition to our group.

And last, but not least, each summer month our club supported local restaurants by having "Members Who Lunch". Members are able to mingle and get acquainted in an informal setting,

You will see our Bouquet of Giving starts over with this fiscal year. Thank you to all who gave so generously last year. I hope you will repeat this year!

## 2021-2022 GARDEN CLUB MEETING SCHEDULE

OCTOBER 14, 2021— Regular meeting—Guest Speaker Ahkeem Desinor discusses Landscape Design

MARCH 10, 2022—Regular Meeting—Garden Fest Planning—Guest Speaker TBD

NOVEMBER 11, 2021—Field Trip to Flamingo Gardens

APRIL 14, 2022— Regular Meeting—Guest Speaker TBD

DECEMBER 9, 2021—Holiday Luncheon—Restaurant TBD

MAY 12, 2022—Scholarship Luncheon

JANUARY 13, 2022—Field Trip to Fairchild Tropical Garden

Members Who Lunch in June, July and August—additional details to follow

FEBRUARY 10, 2022—Regular meeting—Make & Take for Valentine's Day

**VISIT OUR WEBSITE** - [www.coral Springs Garden Club.org](http://www.coral Springs Garden Club.org) **OUR ADDRESS:** PO Box 773334, Coral Springs, FL 33077

What would you like to see in our newsletter? Please email suggestions to [dmolski@bellsouth.net](mailto:dmolski@bellsouth.net).

Membership in the Garden Club is open to all regardless of gender, age, race, ethnicity or religious affiliation.

## The Million Orchid Project Like Orchids?

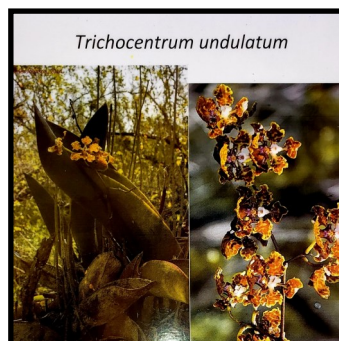
Under the able leadership of Luanne Betz on July 2, 2021, members of the Garden Club of Coral Springs and volunteers from around the community and Coral Springs City workers installed over 100 native orchid species and some Coonties in Orchid Park in Coral Springs. Rich Ackerman of Fort Lauderdale Orchid Society provided planting instructions to the group. Fairchild Tropical Gardens, along with Fort Lauderdale Orchid Society, have been spearheading this drive with the goal of re-establishing 1,000,000 native orchids in South Florida landscapes. Because of the pandemic, the expected 500 seedlings were not available. We hope to have additional orchids available for planting in late August.

Some seedlings were installed in trees with the help of City employees and a bucket truck, using cotton string or burlap twine. Ground orchids and Coonties were planted at the bases of several trees. Half strength 20-20-20 fertilizer applied monthly to promote growth is advisable. Native orchids do not need to be fertilized once they become established in a tree.

The Bletia orchids, common name pine pink, are terrestrial, found in swamps and on logs or stumps. They prefer shade.

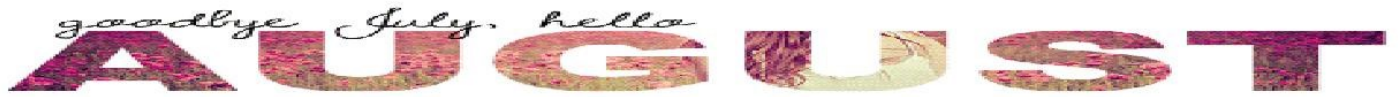
The Trichocentrum orchid, also known as the Spotted Mule Orchid produces a large inflorescence. This will also grow on trees, specifically buttonwood and mangroves.

Please contact Luanne if you wish to volunteer at the next installation.



**SMILE.AMAZON.COM**

**Remember**—You can shop at Amazon and support us! Just sign on to Smile.Amazon.Com and in the upper left hand corner check Supporting. Search for Garden Club of Coral Springs. You get the same great prices, but in addition, we earn 1/2 of 1%!



## WHAT TO PLANT

**Annuals/Bedding plants:** The hottest days of summer limit planting to heat-tolerant coleus, penta, salvia,  
**See Annuals:** [https://edis.ifas.ufl.edu/topic\\_annual\\_landscape\\_plants](https://edis.ifas.ufl.edu/topic_annual_landscape_plants)

**Bulbs:** Aztec lily, butterfly lily, walking iris, and spider lily can be planted any time of the year, even late summer **See Bulbs for Florida:** [https://edis.ifas.ufl.edu/topic\\_bulbous\\_flowers](https://edis.ifas.ufl.edu/topic_bulbous_flowers)

**Herbs:** Herbs that can be planted from plants (not seeds) include bay laurel, ginger, Mexican tarragon, and rosemary.  
**See Herbs:** [https://edis.ifas.ufl.edu/topic\\_herbs](https://edis.ifas.ufl.edu/topic_herbs)

**Vegetables:** Start planting eggplant, okra, peppers, pumpkin, squashes, and tomatoes for the fall garden **See Vegetable Gardening in Florida:** [https://edis.ifas.ufl.edu/topic\\_vegetable\\_gardening](https://edis.ifas.ufl.edu/topic_vegetable_gardening)

## WHAT TO DO

**Palms:** Check older fronds for yellowing as it may indicate a magnesium or potassium deficiency. Apply an appropriate palm fertilizer. **See Palm Nutrition and Fertilization:** [https://edis.ifas.ufl.edu/topic\\_palm\\_nutrition](https://edis.ifas.ufl.edu/topic_palm_nutrition)

**Vegetables:** Solarize the vegetable garden for 4–6 weeks in preparation for fall planting if not done in July. **See Soil Solarization:** [https://edis.ifas.ufl.edu/topic\\_soil\\_solarization](https://edis.ifas.ufl.edu/topic_soil_solarization)

**Poinsettias:** Pinch back poinsettias and mums before the end of the month to allow time for buds to form for winter bloom. **See Poinsettias:** [https://edis.ifas.ufl.edu/topic\\_poinsettia](https://edis.ifas.ufl.edu/topic_poinsettia)

**Ornamental plants:** Fertilize those plants that show signs of deficiencies. Rapid growth and leaching rains may result in nutrient deficiencies in some plants. **See Nutrient Deficiencies (Landscape Plants):** [https://edis.ifas.ufl.edu/topic\\_nutrient\\_deficiencies\\_landscape\\_plants](https://edis.ifas.ufl.edu/topic_nutrient_deficiencies_landscape_plants) and **Landscape Fertilization:** [https://edis.ifas.ufl.edu/topic\\_landscape\\_fertilization](https://edis.ifas.ufl.edu/topic_landscape_fertilization)

**Fertilizer Bans:** Numerous municipalities in Florida prohibit the application of fertilizer to lawns and/or landscape plants during the summer rainy season (June–September). Does such an ordinance exist in your area? <https://ffl.ifas.ufl.edu/pdf/FloridaFertilizerOrdinances.pdf?v=20190606>

**Annuals/Bedding plants:** Remove spent blooms, cut back, and fertilize flowering annuals and perennials to extend the bloom season into the fall months. **See Annuals:** [https://edis.ifas.ufl.edu/topic\\_annual\\_landscape\\_plants](https://edis.ifas.ufl.edu/topic_annual_landscape_plants) and **Perennial Landscape Plants:** [https://edis.ifas.ufl.edu/topic\\_perennials](https://edis.ifas.ufl.edu/topic_perennials)

# September!

## WHAT TO PLANT

**Annuals/Bedding plants:** If summer beds need refreshing, try scarlet sage, nasturtium, celosia, and wax begonia for color into fall. **See *Annuals*:** [https://edis.ifas.ufl.edu/topic\\_annual\\_landscape\\_plants](https://edis.ifas.ufl.edu/topic_annual_landscape_plants)

**Bulbs:** Plant gladiolus every two weeks to stagger blooming. Stake each plant. **See *Bulbs for Florida* :** [https://edis.ifas.ufl.edu/topic\\_bulbous\\_flowers](https://edis.ifas.ufl.edu/topic_bulbous_flowers)

**Herbs:** Plant herbs that tolerate the warm temperatures of early fall, such as Mexican tarragon, mint, rosemary, and basil. **See *Herbs*:** [https://edis.ifas.ufl.edu/topic\\_herbs](https://edis.ifas.ufl.edu/topic_herbs)

**Vegetables:** September opens the door for more vegetables to plant. **See *Vegetable Gardening in Florida*:** [https://edis.ifas.ufl.edu/topic\\_vegetable\\_gardening](https://edis.ifas.ufl.edu/topic_vegetable_gardening)

**Shrubs:** Consider placing native shrubs, like beautyberry, marlberry, firebush, and dahoon holly, where you can view the birds that enjoy them. **See *The Florida-Friendly Landscaping™ Guide to Plant Selection and Landscape Design*:**



## WHAT TO DO

**Lawns:** Continue to monitor the lawn for signs of insect damage. Fall armyworms, chinch bugs, mole crickets, and sod webworms are still active this month. **See *Turfgrass Pest Insects*:** [https://edis.ifas.ufl.edu/topic\\_turf\\_pest\\_insects](https://edis.ifas.ufl.edu/topic_turf_pest_insects)

**Fertilizer Bans:** Numerous municipalities in Florida prohibit the application of fertilizer to lawns and/or landscape plants during the summer rainy season (June–September). Does such an ordinance exist in your area? <https://ffl.ifas.ufl.edu/pdf/FloridaFertilizerOrdinances.pdf?v=20190606>

**Vegetable gardens:** Prepare the fall vegetable garden if not done in August. Using transplants from your local garden center will get the garden off to a fast start, but seeds provide a wider variety from which to choose. **See *Vegetable Gardening in Florida*:** [https://edis.ifas.ufl.edu/topic\\_vegetable\\_gardening](https://edis.ifas.ufl.edu/topic_vegetable_gardening)

**Perennials and bulbs:** Divide and replant perennials and bulbs that have grown too large or need rejuvenation. Add organic matter to planting beds and monitor water needs during establishment. **See *Seeds and Propagation (Lawn and Garden)*:** [https://edis.ifas.ufl.edu/topic\\_garden\\_propagation](https://edis.ifas.ufl.edu/topic_garden_propagation)

**Irrigation:** Check that irrigation systems are providing good coverage and operating properly before summer rains taper off. **See *Landscape Irrigation*:** [https://edis.ifas.ufl.edu/topic\\_landscape\\_irrigation](https://edis.ifas.ufl.edu/topic_landscape_irrigation)

**Citrus:** Fertilize citrus with a balanced fertilizer either this month or in October. Use controlled-release nitrogen because rain will not leach it from the soil too quickly. **See *Home Citrus Culture*:** [https://edis.ifas.ufl.edu/topic\\_citrus\\_home\\_citrus\\_culture](https://edis.ifas.ufl.edu/topic_citrus_home_citrus_culture)

# THOUGHT YOU SHOULD KNOW

## AUGUST BIRTHDAYS

Sipora Meschino 08-01

Candis Buoniconti 08-07

Beth Werter 08-22

Nancy Klahr 08-22

## SEPTEMBER BIRTHDAYS

Doris Goldberg 09-06

Terry Tipton 09-08

Elaine Goldman 09-14

Keren Bolter 09-15

Rosemary Perrotta 09-18

Dotty Molski 09-30

## PLANT OF THE MONTH

### Dwarf Powderpuff



South-Florida-Plant-Guide.com

One of the most picturesque red flowering plants, this shrub fits in nicely in any size South Florida yard. The branches grow outward in layers with flowers and buds along each branch.

The blossoms appear on and off all year (more in warmer months), with buds resembling little red berry clusters that open into scarlet powderpuff flowers.

This charming shrub attracts hummingbirds and butterflies and works in almost any light - providing color even in partly shaded beds.

Place these shrubs 2-1/2 to 3 feet apart. Come out from the house 2 feet or more. This plant works fine in containers.

Evergreen and cold-tolerant, this shrub can be used anywhere in South Florida.

It grows at a moderate pace, less fast than the full-size powderpuff plant.

The dwarf variety can be kept 3 feet tall.

Though this plant can be grown in full sun, it actually seems to do best in a part sun to part shade location.

ORCHID LEVEL

ROSE LEVEL

AZALEA LEVEL

BEGONIA LEVEL

DAISY LEVEL



**BOUQUET OF GIVING**

**THANK YOU FOR YOUR GENEROSITY**

Orchid:	\$1000
Rose:	\$ 500
Azalea:	\$ 250
Begonia:	\$ 100
Daisy:	\$ 50

# PATRON DONOR INCENTIVES

		<b>GCCS*</b>	<b>FFGC*</b>	<b>PATCH</b>	<b>BADGE</b>	<b>MEMBERSHIPS ,EVENTS</b>
<b>ORCHID</b>	\$1000	X	X	2		3 (M/E) for 2 people**
<b>ROSE</b>	\$ 500	X	X	1		2 (M/E) for 1 person**
<b>AZALEA</b>	\$ 250	X	X	1	1	1 (M/E) for 1 person
<b>BEGONIA</b>	\$ 100				1	1 (E ) for 1 person
<b>DAISY</b>	\$ 50			1	1	

\*GCCS: THE GARDEN CLUB OF CORAL SPRINGS

\*FFGC: FLORIDA FEDERATION OF GARDEN CLUBS

<b>*MEMBERSHIPS</b>	American Orchid Society	\$ 79 each
	Bonnet House	\$ 65 each 2/\$100
	Butterfly World	\$ 70 each
	Fairchild Tropical Gardens	\$ 95 each 2/\$120
	Flamingo Gardens	\$ 65 each 2/\$115
	Mounts Botanical Garden	\$ 50 each 2/\$ 75
	National Wildlife Federation	\$ 75 Garden Tools
	Sawgrass Nature Center	\$ 30 each 4/\$ 50

<b>*EVENT</b>	<b>MAY LUNCHEON</b>
	<b>HOLIDAY PARTY</b>

\*\*Top two levels, 50% of money will go to Scholarship Fund

Patrons names will be acknowledged on Website, Facebook and Newsletter

# MOSQUITO

## Repelling Plants



### BASIL

*Ocimum basilicum*

- ☀️ **NEEDS:** Full sun
- 💧 **NEEDS:** Well-drained soil
- 📍 **ZONES:** 10 and above
- 📏 **HEIGHT:** 1 to 2 feet

- ⊖ **ALSO REPELS:** Flies
- 👐 **SAFE FOR SKIN:** Yes
- ★ **FEATURES:** Toxic to mosquito larvae



### CITRONELLA

*Cymbopogon nardus*

- ☀️ **NEEDS:** Full sun / partial shade
- 💧 **NEEDS:** Well-drained soil
- 📍 **ZONES:** 10 – 11
- 📏 **HEIGHT:** 5 to 6 feet

- ⊖ **ALSO REPELS:** Flies
- 👐 **SAFE FOR SKIN:** Yes, most effective as an oil
- ★ **FEATURES:** Antifungal and antibacterial properties in oil



### LEMONGRASS

*Cymbopogon*

- ☀️ **NEEDS:** Full sun
- 💧 **NEEDS:** Well-drained soil
- 📍 **ZONES:** 9 – 11
- 📏 **HEIGHT:** 3 to 6 feet

- ⊖ **ALSO REPELS:** Flies
- 👐 **SAFE FOR SKIN:** Yes but keep away from pregnant women and new moms
- ★ **FEATURES:** Toxic to mosquito larvae

# MOSQUITO

## Repelling Plants



## PEPPERMINT

*Mentha x piperita*

- ☀️ **NEEDS:** Full sun
- 💧 **NEEDS:** Damp soil
- 🌿 **ZONES:** 3 – 11
- 📏 **HEIGHT:** 1 to 3 feet

- ⊖ **ALSO REPELS:** Spiders
- 👐 **SAFE FOR SKIN:** Yes
- ★ **FEATURES:** Toxic to mosquito larvae



## FLOSS FLOWER

*Ageratum houstonianum*

- ☀️ **NEEDS:** Full sun / partial shade
- 💧 **NEEDS:** Well-drained soil
- 🌿 **ZONES:** 10 – 11
- 📏 **HEIGHT:** 0.5 to 2 feet

- ⊖ **ALSO REPELS:** Flies, deer, rabbit
- ⊕ **ATTRACTS:** Butterflies, hummingbirds
- 👐 **SAFE FOR SKIN:** No
- ★ **FEATURES:** Toxic to grazing animals



## SCENTED GERANIUM

*Pelargonium*

- ☀️ **NEEDS:** Full sun / partial shade
- 💧 **NEEDS:** Well-drained soil
- 🌿 **ZONES:** 10 – 11
- 📏 **HEIGHT:** 1 to 3 feet

- ⊖ **ALSO REPELS:** Flies
- ⊕ **ATTRACTS:** Butterflies
- 👐 **SAFE FOR SKIN:** Yes, most effective as an oil
- ★ **FEATURES:** Oil can be used to remove scars